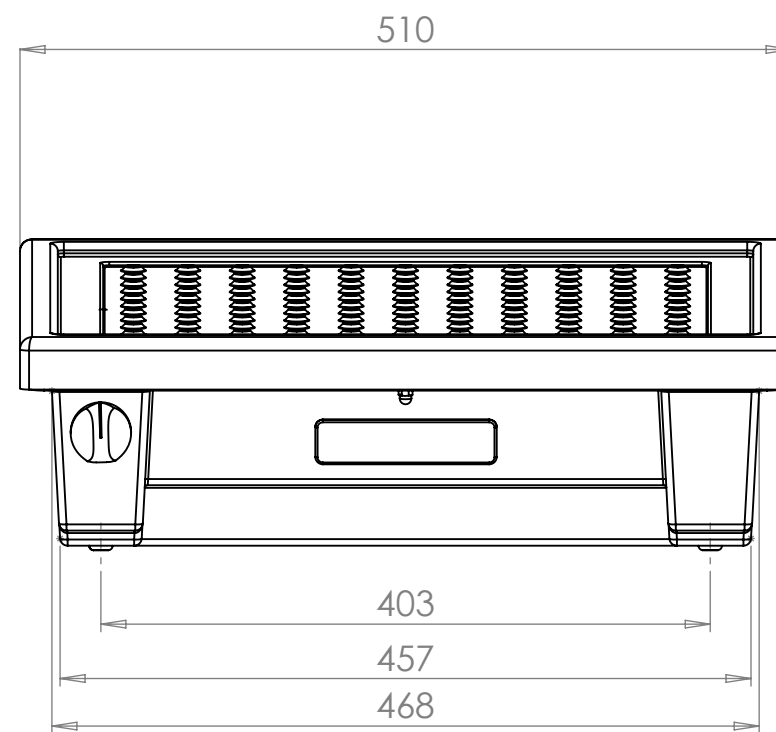
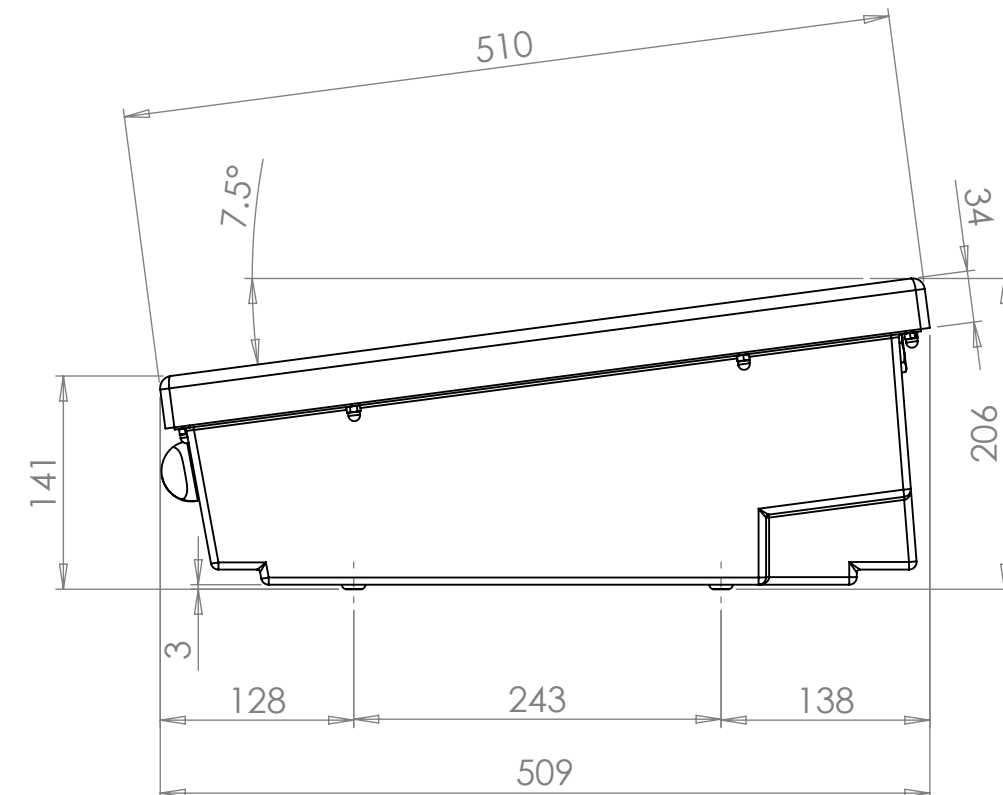


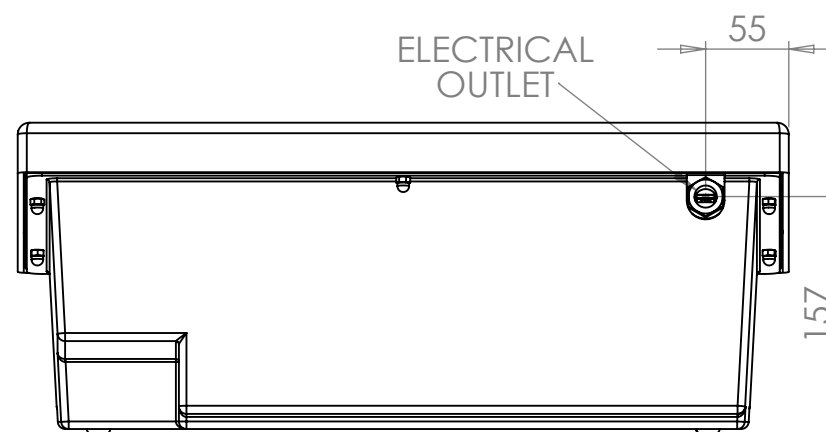
LEFT-HAND SIDE
Recesses for rail mounting
(use 400mm between rails)



FRONT



RIGHT-HAND SIDE



REAR

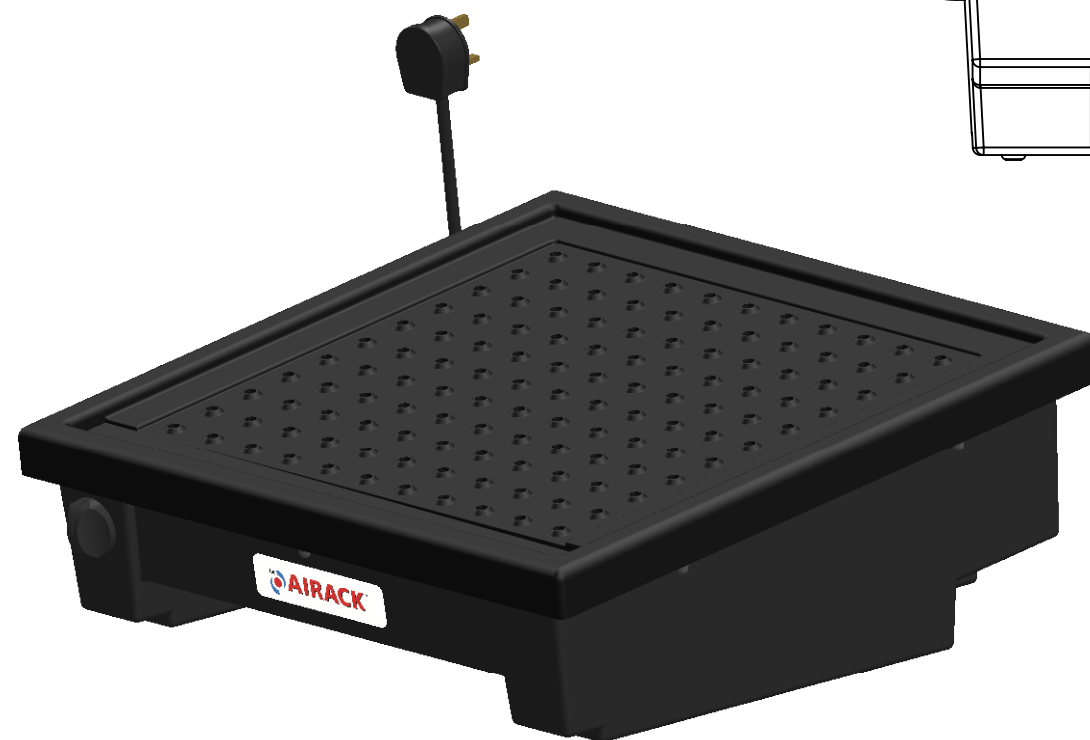
Installation

Position on a level surface capable of taking the weight of the Airack plus a basket full of glasses ($\geq 10\text{Kg}$). Fit onto a flat surface with the Airack resting on its feet, or onto rails (locating on the front and back recesses in the base).

Clearance is required above the Airack to allow a basket of glasses to be placed on top of the unit.

The air intake in the centrally recessed base of the unit must not be covered or restricted.

Connect the Airack to the electrical supply using the plugtop (fused @ 3 Amps) into a switched UK 3-pin switched socket (within 1.5m of the Airack).



CS-A0055 AIRACK GLASS DRYER - LITE - 45 SIZE

NOTES:

VERSION	DRAWN	ECO	DATE
v1	VC	-	29-3-2017
UNLESS OTHERWISE SPECIFIED - ALL DIMENSIONS ARE IN MILLIMETERS			
GENERAL LIMITS: $\pm 2\text{ mm}$			
MATERIAL: CS-A0055			
TREATMENT NONE			
DEBUR AND BREAK SHARP EDGES			
DO NOT SCALE DRAWING			

CLENAWARE
SYSTEMS

TITLE: **AIRACK GLASS DRYER
LITE - 45 SIZE
GENERAL DIMENSIONS**

DWG NO. **CS-A0055-01** VERSION **v1**