

Model:
XDA600-P-K-LE

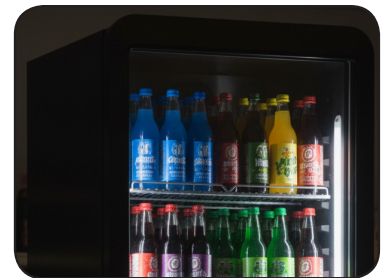
Black Single Door Display Fridge
5 x Adjustable shelves, Vertical LED Lighting

General Information

The Prodis XDA600-P-K-LE is a premium single-door display fridge meticulously engineered to elevate product presentation and reduce operating costs in any retail or hospitality setting. Its striking, full black interior and exterior create a sophisticated “jewel box” effect, allowing the vibrant colors of your products to stand out with maximum visual impact.

Combining a highly impressive C energy rating with full-length vertical LED lighting, this premium fridge not only ensures significant energy savings but also showcases your inventory with brilliant, uniform illumination. The robust, lockable door provides enhanced security, while integrated shelf-edge ticket strips allow for quick and professional pricing. The XDA600-P-K-LE is the smart, efficient, and versatile choice for businesses that prioritize both aesthetics and performance

C



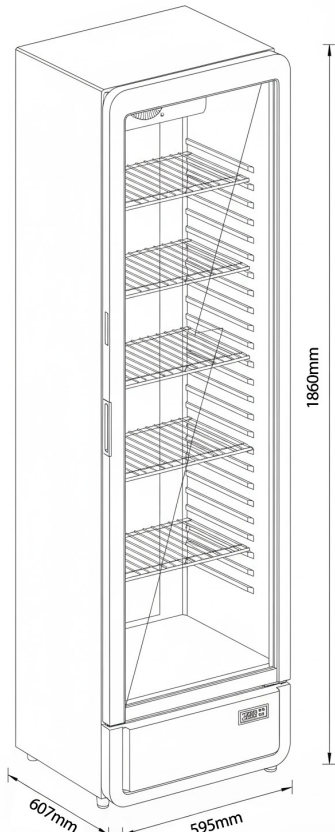
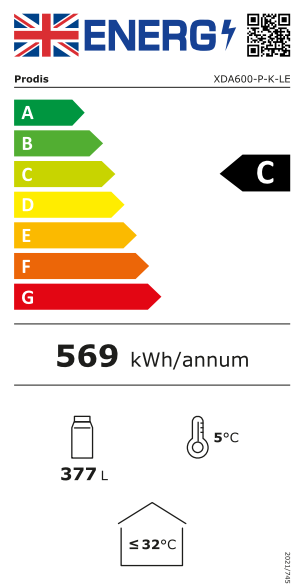
Key Features

- Low running costs
- C energy rating
- Vertical LED lighting
- Fan-assisted cooling
- Digital temperature control
- +1°C to +9°C temperature range
- Climate class CC2 (32°C; 65%RH)
- 377 litre gross capacity
- 5 adjustable shelves
- Full black exterior and interior
- Lockable door
- Inset door handle
- Front adjustable feet, rear rollers
- R290 hydrocarbon refrigerant
- 13amp plug-in cabinet

Custom Branding



Transform your Prodis XDA600-P-K-LE fridge into a powerful marketing asset with our professional vinyl wrapping service. We can custom-brand the appliance with your own logo, colours, and vibrant graphics, turning it into a silent salesman that captures customer attention and reinforces your brand identity. Ideal for enhancing your in-store presence, this is the perfect way to make your display fridge truly your own. concepts.

Technical Data		Drawing
Model	XDA600-P-K-LE	
Color	Black exterior and interior	
Door Frame	Plastic	
Glass	Double glazed	
Door handle	Inset	
Cabinet construction	Painted steel	
Gross volume	377 litres	
Net volume	343 litres	
Display Area	0.75 m ²	
Cabinet dimensions	595 x 607 x 1876 (w,d,h mm)	
Internal dimensions	595 x 503 x 1456 (w,d,h mm)	Energy Label <div data-bbox="1181 1052 1476 1635">  </div>
Packaged dimensions	640 x 640 x 1950 (w,d,h mm)	
Shelf dimensions	434 x 405mm	
Net weight	60 kg	
Gross weight	65 kg	
Heated glass	×	
Doors	1	
Self closing	✓	
Shelves	5 adjustable	
Shelf edge ticket strips	✓	
Controller	Digital controller (white display)	
Door dimensions	1563 x 595 (w,d mm)	
Lights	1 x Vertical LED side mounted	
Light power	10 W	
Light switch	Internal	
System type	Plug-in	
Temperature range	+1°C to +10°C	
Climate class	2 (25°C 60% RH)	
Refrigerant	R290	
Refrigerant charge	58 g	
Compressors	1 (Inverter)	
Evaporator fans	1	
Condenser fans	1	
Noise level	44.4 dB	
Energy consumption	1.56 kWh / 24h	
Rated power	300 W	
Voltage	220V / 50Hz	
Fuse requirements	13amp	




Approvals	Available At	Document #
  		